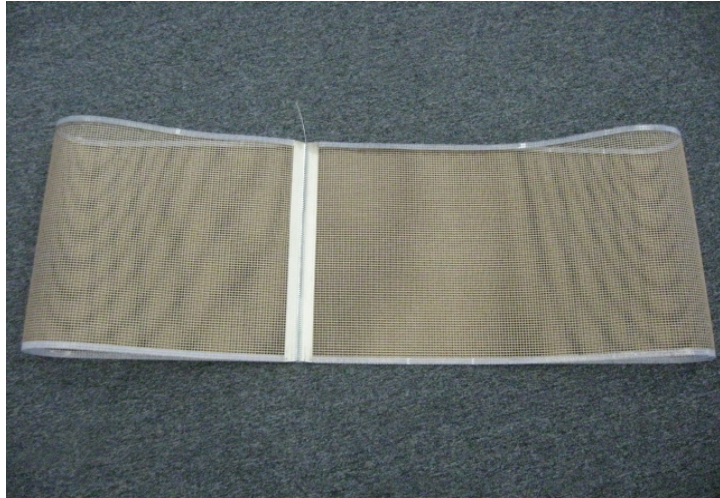


# MEDIA OPTIONAL TEFLON BELT

PART #

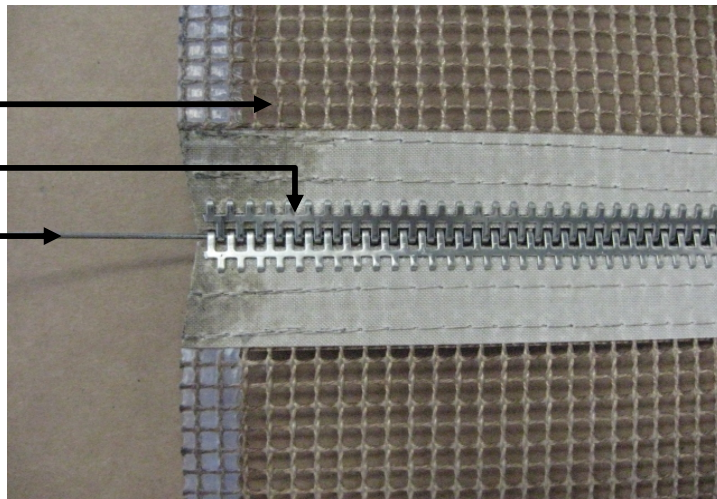
FM710013



Teflon Belt

"Zipper" Connector

Zipper Lock Rod



1. The Teflon belt is installed over the rubber coated rollers.
2. The ends of the Teflon belt is "zippered" together with the lock rod.
3. The Teflon belt stays in track between the chain that holds the rubber coated rollers.

