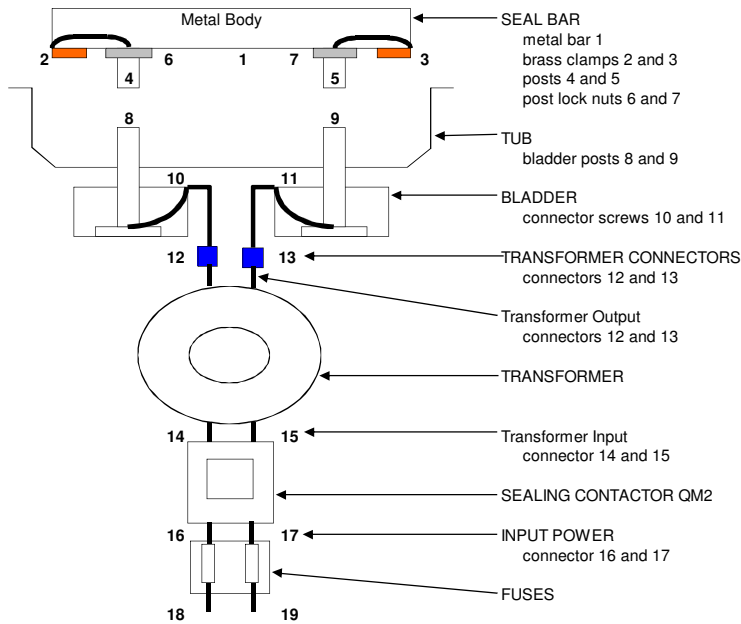


**MVS SEAL BAR CONTINUITY AND VOLTAGE TEST POINTS**  
**(Qualified Technician Only)**



Verify seal time is programmed on the control board. (Perform seal bar test 75% vacuum and 2.5 sec seal.)  
 Remove the seal bar and check continuity at the following locations

Part	Location	Continuity	Test Results Yes or No
Seal bar	1 - 2	No	
	1 - 3	No	
	1 - 4	No	
	1 - 5	No	
	1 - 6	No	
	1 - 7	No	
	2 - 3	Yes	
	2 - 4	Yes	
	2 - 5	Yes	
	2 - 6	Yes	
	2 - 7	Yes	
	3 - 4	Yes	
	3 - 5	Yes	
	3 - 6	Yes	
3 - 7	Yes		

Part	Location	Continuity	Test Results Yes or No
Seal bar	4 - 5	Yes	
	4 - 6	Yes	
	4 - 7	Yes	
	5 - 6	Yes	
	5 - 7	Yes	
	6 - 7	Yes	
Bladder	8 - 10	Yes	
	8 - 12	Yes	
	9 - 11	Yes	
	9 - 13	Yes	
Fuses	16 - 18	Yes	
	17 - 19	Yes	

If above continuity tests are okay at all points, proceed to voltage test points.

**MVS SEAL BAR CONTINUITY AND VOLTAGE TEST POINTS**  
**(Qualified Technician Only) - continue**

Part	Location	Factory Value	Measured Value
Fuse block input	18 - 19		
Fuse block output	16 - 17		
Contact input	16 - 17		

Manually engage contactor for the following test points.

Part	Location	Factory Value	Measured Value
Contact output	14 - 15		
Transformer input	14 - 15		
Transformer output	12 - 13		